

# crudesko

09 62 00 DECORATIVE  
CEMENT/EPOXY FLOORING



## product description:

**Crudesko® is a simple, decorative 3mm thick floor and wall system made from a combination of cements, solvent-free epoxies and urethanes.**

The Crudesko® flooring system allows designers to achieve an infinite number of patterns and designs quickly & easily. The process consists of 2–3 coats of decorative cement buried in a clear, protective coat of industrial epoxy, then a non-slip urethane top coat.



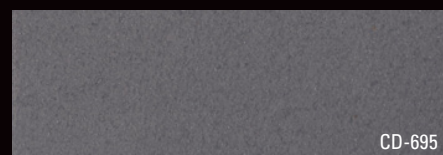
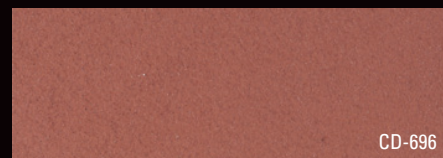
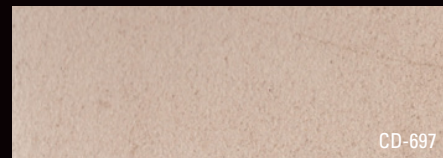
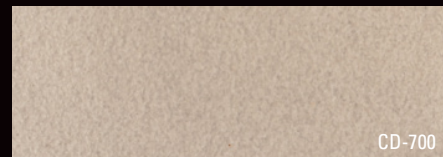
## typical uses:

- Stadiums
- Theatres
- Auto Dealerships
- Banquet Halls
- Office Building Lobbies
- Bars, Pubs and Taverns
- Hotels
- Nightclubs and Lounges
- Restaurants
- Casinos
- Shopping Centres
- Retail Stores

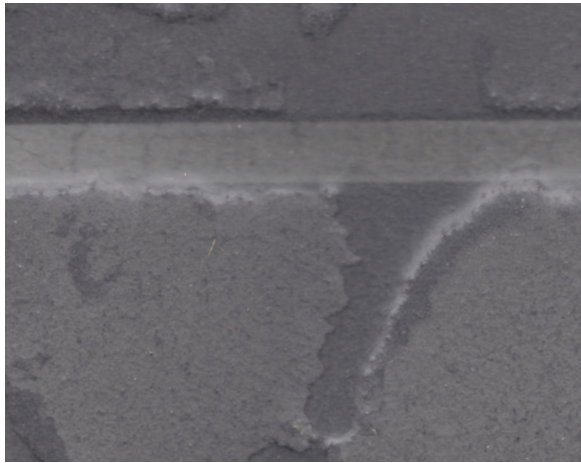
## product features:

- Can mimic the look of tile, stone, concrete, wood, etc.
- Bonds to most clean, sound, solid substrates
- Standard thickness is 2–5 mm, can be trowelled to a feathered edge.
- Can be ground & polished over time to maintain the floor (similar to terrazzo flooring) .
- Optional satin or gloss finish installed with non-slip.

## colour chart







## general preparation:

Remove any contamination, all surfaces to be coated must be clean, dry and free of all contaminants. New concrete must be cured a minimum of 30 days, with resulting in no more than 4% moisture content. Cracks and control joints need to be addressed prior to installation.

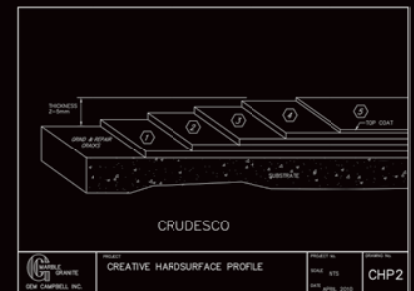
For movement joints, please refer to specifications Any 3–4 mm metal transition strips or finishing edges, straight or with a radius, can be used in conjunction with this material. For patching holes, sloping areas towards floor drains or away from walls, the area needs to be assessed and addressed prior to installation of step 1. For large areas requiring a build-up of material, consult with the concrete contractor, engineer and Shoreway Flooring to ensure compatibility with the system. This system can be installed on floors with varying degrees of slope. Vertical surfaces can be installed at the same time, and in the same manner in which the floor is installed.

### ***Tiles, Terrazzo and other Cementitious Substrates:***

Shot blasting and diamond grinding are the recommended methods. These two means of mechanical abrasion will clean the surface and open the pores of the concrete to allow maximum penetration of the primer. Ensure the methods of mechanical abrasion are dust-free.

## application:

This is a five coat cementitious, epoxy and urethane system with varied drying times between coats. Both large & small areas can be installed in short time frames if climate can be controlled.



## curing:

Crudesco® will support light foot traffic in 12 hours and reach full cure and chemical resistance at 7 days.

## limitations:

- This product must be installed in a controlled environment, with a minimum surface and substrate temperature of 16°C.
- Product will amber with prolonged direct ultraviolet light.
- This product is not recommended for areas that are exposed to severe thermal shock (interior only & not recommended for commercial kitchens).
- Substrate must contain less than 4% moisture without the use of a moisture control system.



# crudesko

09 62 00 DECORATIVE  
CEMENT/EPOXY FLOORING

## warranty:

Standard 1 year construction applies on full scope of work. Longer warranties and maintenance packages available upon request.

## company history:

Established in 1974, Shoreway Flooring Ltd. is an industry leader in carpet, resilient floorings, stone and marble. We have completed hundreds of projects, large and small throughout Ontario. Company-wide dedication to quality, service, professionalism, and a commitment to meeting clients needs are the core values of the company.

## for info & full 3-part specification contact:

Gary Chiesa

C: 416-936-6120

E: shorewayflooring@rogers.com



11 Skipton Court  
North York, ON M3M 2S9  
P: (416) 635-1541 F: (416)635-9098



## TECHNICAL DATA

SHEEN:	Satin or Gloss
AVERAGE THICKNESS:	2-5mm
CURE TIME:	Light foot traffic 12hrs Full Cure 7 days
CLEAN UP:	Warm water & solvent free epoxy thinners

## PERFORMANCE DATA:

COMPRESSIVE STRENGTH:	5000 psi at 28 days ASTM C109/mod air cure only
FLEXURAL STRENGTH:	1200 psi at 28 days (ASTM C348)
SLIP RESISTANCE 25:	0.97 DRY 0.82 WET
VOC:	N/A
ABRASION RESISTANCE:	.033g ASTM D4060-90
CHEMICAL RESISTANCE:	Refer to specification
COEFFICIENT OF FRICTION:	0.734 DRY, CLEAN