

# diama-top

03 35 43 ARDEX DIAMA-TOP™  
POLISHED CONCRETE TOPPING



## product description:

The ARDEX Diamo-Top Polished Concrete System incorporates proper substrate preparation, high-performance concrete toppings, concrete treatments, finishing and maintenance materials that result in a visually stunning and durable polished concrete floor requiring only minimal maintenance and significant cost savings in the application as well as maintenance stages.



**ARDEX ENGINEERED CEMENTS**

## typical applications:

- Warehouses
- Schools
- Retail
- Transportation Facilities
- Restaurants
- Offices

## product features:

Polished concrete floors are the fastest growing segment in the flooring industry. This rapid growth is due to the many benefits provided by polished concrete surfaces including:

- Outstanding visual aesthetics
- Very economical
- Long lasting with incredible durability
- Strong environmental benefits
- Easy maintenance
- Many design options



## colour chart

Full colour chart to come





## ARDEX polished concrete floors are “green”!

A key feature of polished concrete floors are the many environmental benefits including:

- High reflectivity which saves on lighting and energy requirements.
- Concrete floors Retain Heat in cold weather and Stay Cooler in warm weather thereby reducing energy consumption
- Concrete floors reduce Eliminate trapped dust and allergens often found in porous flooring, especially carpeting
- Concrete floors Reduce energy and raw material consumption required with the manufacturing of floor coverings
- Polished concrete floors Last Longer thereby reducing energy and raw materials required to replace them
- Polished concrete floors Utilize sustainable materials such as limestone — the most abundant raw material on earth



## general preparation:

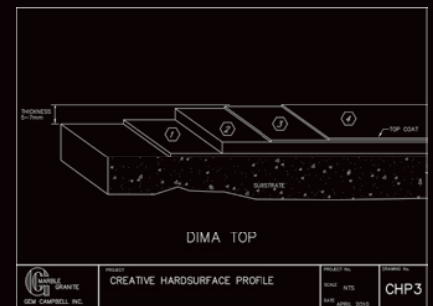
Shot blasting and diamond grinding are the recommended methods. These two means of mechanical abrasion will clean the surface and open the pores of the concrete to allow maximum penetration of the primer (minimum CSP rating is 3).

Ensure the methods of mechanical abrasion are dust-free. Remove any contamination; all surfaces to be coated must be clean, dry and free of all contaminants. New concrete must be cured a minimum of 30 days resulting in no more than 4% moisture content prior to application. Cracks and control joints need to be addressed prior to installation.

## application:

The Ardex Diamat-Top polished concrete system is installed in two steps and then ground and polished. It is then treated with Ardex Diamatic Flor-Hard and Ardex Diamatic Flor-Finish, a specially formulated lithium densifier and floor finish specifically designed for use with ARDEX Diamat-Top. The lithium chemistry provides a much more stain and abrasion resistant, low maintenance surface.

ARDEX DIAMATIC Flor-Finish requires only routine damp mopping to keep it clean and an occasional additional coat to preserve the floor at the lowest possible level of maintenance.



## curing:

Light pedestrian use only in the 24 hours after installation. Normal traffic recommended 14 days after completion of the ULTRAFLOAR ARDEX DIAMATIC Concrete Topping System. Protect the finished ULTRAFLOAR ARDEX DIAMATIC Polished Concrete System from continuing construction and build build-out as needed by installing the DIAMATIC PRIMO-COVER Protective Floor Covering or DIAMATIC ECONO-COVER Protective Floor Covering.

## limitations:

- This product must be installed in a controlled environment with a minimum surface and substrate temperature of 16°C.
- This product is not recommended for areas that are exposed to severe thermal shock (interior only & not recommended for commercial kitchens).
- Substrate must contain less than 4% moisture without the use of a moisture control system.
- This product is intended to be a concrete topping only, it is not meant to be installed over top of existing surfaces such as tile, terrazzo or wood.



# diama-top

03 35 43 ARDEX DIAMA-TOP™  
POLISHED CONCRETE TOPPING

## warranty:

Standard 1 year construction applies on full scope of work. Longer warranties and maintenance packages available upon request.

## company history:

Established in 1974, Shoreway Flooring Ltd. is an industry leader in carpet, resilient floorings, stone and marble. We have completed hundreds of projects, large and small throughout Ontario. Company-wide dedication to quality, service, professionalism, and a commitment to meeting clients needs are the core values of the company.

## for info & full 3-part specification contact:

Gary Chiesa

C: 416-936-6120

E: shorewayflooring@rogers.com



11 Skipton Court  
North York, ON M3M 2S9  
P: (416) 635-1541 F: (416) 635-9098

## TECHNICAL DATA

SHEEN:	Satin or Gloss
AVERAGE THICKNESS:	6mm (1/4")
CURE TIME @ 22°C (72°F):	Light foot traffic 24hrs Full Cure 14 days
CLEAN UP:	Warm water

## PERFORMANCE DATA:

COMPRESSIVE STRENGTH:	6100 psi at 28 days ASTM C109/mod air cure only
FLEXURAL STRENGTH:	1200 psi at 28 days (ASTM C348)
FLAMMABILITY (ASTM E84):	Flame spread -0-
FUEL CONTRIBUTION:	-0-
SMOKE DEVELOPMENT:	-0-
VOC:	N/A
SLIP RESISTANCE 25:	0.97 DRY 0.82 WET